

# Work Positioners, WP 205

## WP 205

Operates with loads of up to 205kg. Weight distribution is spread evenly over all four wheels and with the unit's short wheelbase and light self-weight the WP is the safest and most manoeuvrable lifter on the market! An improvement in the working environment resulting in greater profitability for your company.

## Work Positioners

Work Positioners operates with loads of up to 205kg. Weight distribution is spread evenly over all four swivelling wheels and with the unit's short wheelbase and light self-weight the Work Positioner is the safest and most manoeuvrable lifter on the market!

An improvement in the working environment resulting in greater profitability for your company.

### Charger

Charge indicator highlights battery condition and cannot overcharge the battery using an auto-cut-off function. The unit is suitable for most worldwide voltages.

### Perfect weight distribution

Due to the lifting mast unique positioning at the rear of the chassis Edmolift have achieved near perfect weight distribution providing unrivalled manoeuvrability. The 100% vertical mast eliminates problems such as platform drift found on other products.

### Compact design

The WP features an extremely compact design which is also very easy to clean.

## Product features

- Dual speed elevation and descent for safer, more efficient control.
- Battery charge indicator mounted centrally on the push handle in direct view.
- Easily customised for your specific requirements - higher lift heights, wider straddles etc.
- Options include: box handlers, reel handlers, barrel handlers, sack handlers etc.
- Fully compliant with EN1757.1 and CE-marked.

## Specifications, WP 205

Model	WP 205
Art. no.	85814
Capacity	205 kg
Max. platform height	1320 mm
Closed height	105 mm
Length	1015 mm
Width	560 mm
Height	1590 mm
Loading area width	600 mm



# Work Positioners, WP 205

Loading area length	560 mm
Battery	24V/12Ah kg
Charger	1,5A/230V kg
Weight pack. incl.	64 kg

## Work Positioners, WP 205

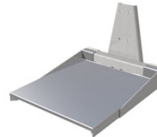
### Box/crate handling forks

Your ideal solution for lifting and handling boxes and crates with a pick up lip. The forks simply fit either side of the box or crate and secure the load using the lip around the rim of the container. The size of the forks can be made to suit your requirements.



### Box/crate handling forks and removable stainless steel platform

With all the advantages of the box/crate forks but with the added benefits of a removable stainless steel general purpose platform.



### Foldable plastic platform

Under the all purpose Polyurethane platform you will find a pair of lifting forks. A great tool for many lifting and handling applications. The platform simply hinges upward and locks in position to reveal the steel section forks.



### Foldable platform steel mesh

Expanded steel mesh platforms are designed to be used with various types of specialised loads but are ideally suited for use with high temperature products. The platform hinges upwards and locks in place to reveal a pair of steel forks.



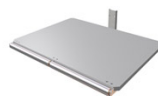
### Jib arm with lifting eye bolt

Jib arm length can be made to suit your load, works as a crane arm. A great tool for lifting and positioning loads that have to be lifted from above.



### Platform with lead roller

The lead gravity roller assists with the transfer of the load onto and off the platform.



## Powered drum and reel gripper

Powered grip and easy turn manual rotation. Securely grips any cylindrical object and can rotate it from vertical to horizontal and back again. Ideal for picking and placing packing reels and lifting and pouring barrels and vessels of liquid, powder and graduals.



## Reel mandrel

Designed to lift packing reels with a standard 48mm core size and transfer them to packing line or reel stand.



## Reel rotator

Picks up a vertical reel and rotates it through 90 degrees to the horizontal position for transfer to packing line. Suitable for a 76 mm core size. Manual operation using an easy to operate over-centre clamp.



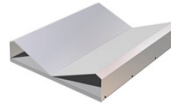
## Twin mandrel

Reels and runs locate on the two mandrels leaving the core free to locate on the packing line take off spool.



## V-cradle

Reel is secured on the cradle leaving the core free for a spigot to be passed through it and then lifted onto the packing line.



## Quick bracket

If you have two or more attachments then this is the right option for you! Rather than using time consuming screw in fixings this option allows you to change attachments in seconds.

